

- Offering the most flexible shading option of any window furnishing
- All individually measured and manufactured in our own workshop under stringent quality control.
- Wide bodied aluminium headrail with 180° self aligning trucks fitted on low profile brackets to reduce light percolation
- Chain/cord, Wand or Monocomand Operation
- All fabrics flame retardant to BS5867 Pt2b minimum. Colourfast to BF EN ISO 105-BO1: 1999
- Large range of fabrics available – recommended ranges for specific applications
- Machine sewn top & bottom hems with double stabilising chains and weights or consealed ballast
- Ultra Fresh coating = Antibacterial & Antifungal properties – kills germs including MRSA & inhabits growth of mold and mildew
- Repairs and Contract Maintenance available



**CONTACT US TODAY  
FOR A FREE SITE SURVEY & QUOTATION**

**0800 3 10 10 20**



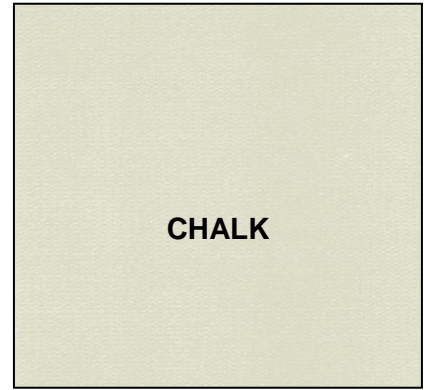
CONTRACTORS HEALTH & SAFETY ASSESSMENT SCHEME  
Accredited Contractor  
www.has.gov.uk



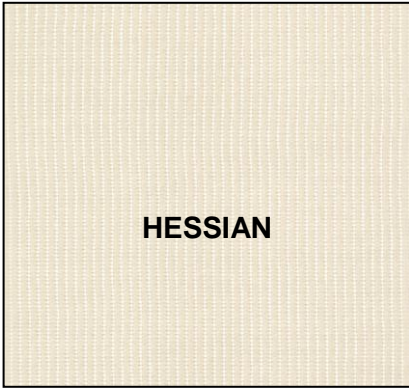
**WHITE**



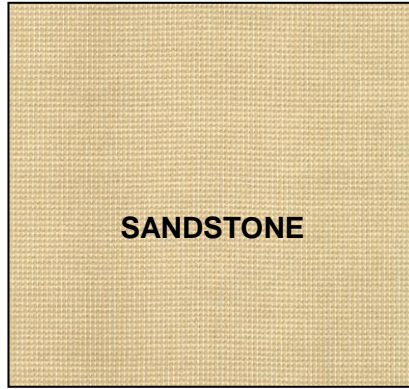
**CREAM**



**CHALK**



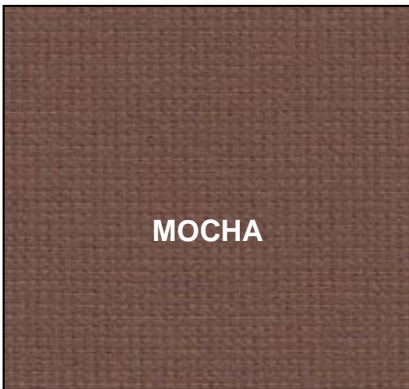
**HESSIAN**



**SANDSTONE**



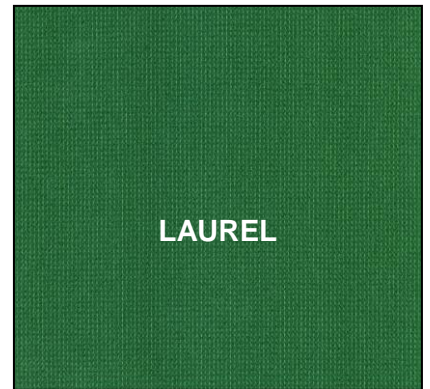
**BEIGE**



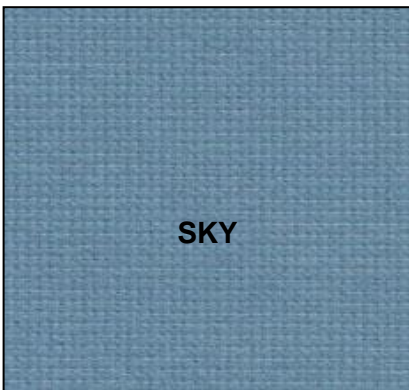
**MOCHA**



**GREY**



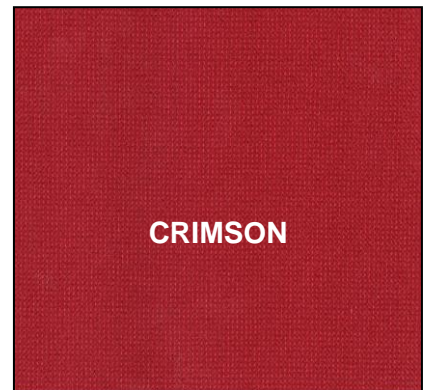
**LAUREL**



**SKY**



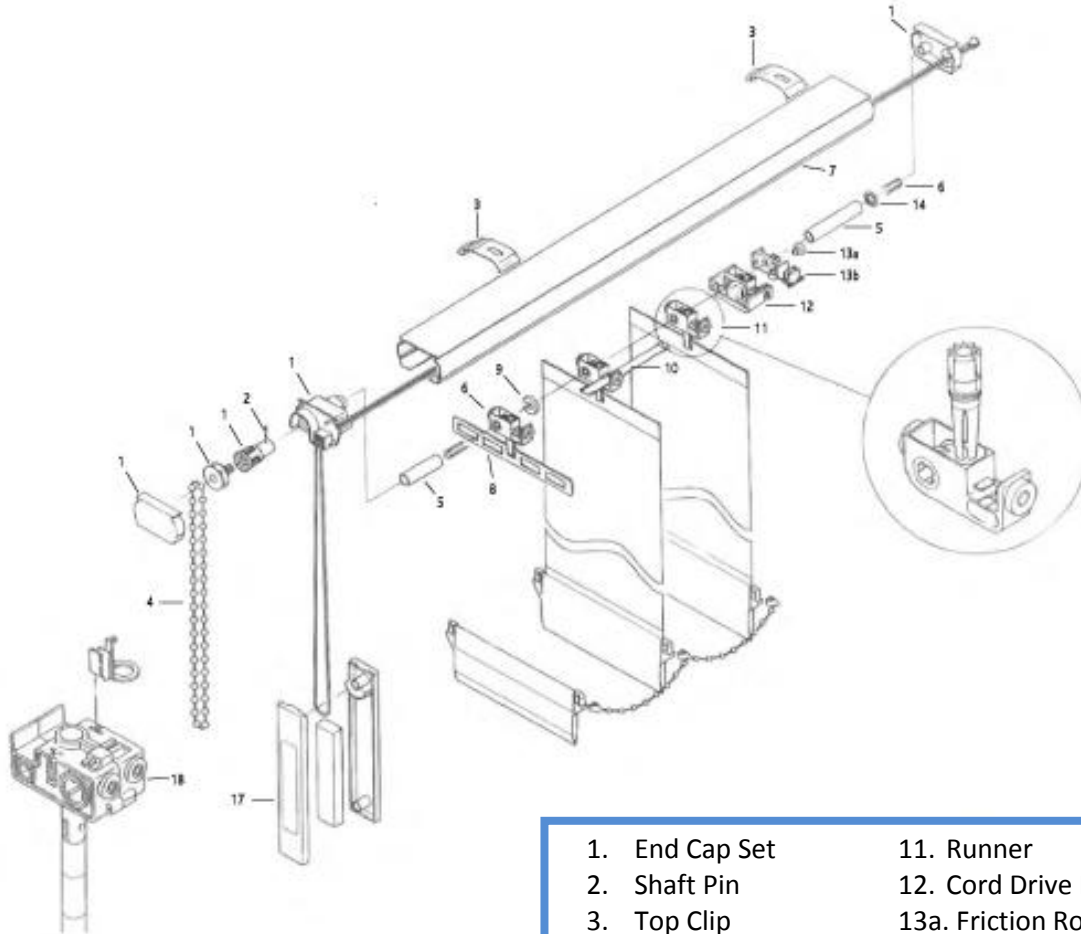
**ROYAL**



**CRIMSON**



Colours only as good as the quality of print  
Please ask for actual fabric samples



- |                    |                           |
|--------------------|---------------------------|
| 1. End Cap Set     | 11. Runner                |
| 2. Shaft Pin       | 12. Cord Drive Runner     |
| 3. Top Clip        | 13a. Friction Rod Support |
| 4. Operating Chain | 13b. Magnetic Attachment  |
| 5. Distance Tube   | 14. Retaining Washer      |
| 6. Tilt Rod        | 15. Bottom Weight         |
| 7. Track           | 16. Bottom Chain          |
| 8. Slat Holder     | 17. Cord Weight           |
| 9. C-Clip          | 18. Tilt Wand Mechanism   |
| 10. Link           | 19. Operating Cord        |

**CONTACT US TODAY  
FOR A FREE SITE SURVEY & QUOTATION**

**0800 3 10 10 20**

There are various stacking options -

All of the following are also available in left hand control



**Right Hand Control  
& Stack**



**Right Hand Control,  
centre stack**



**Right Hand Control,  
left stack**



**Right Hand Control,  
split draw**



**Right Hand Control,  
multiple stack**



**Right Hand Control,  
left stacked sloped**

**Formula for measuring stack back**

89mm Blind

Allow 45mm – Plus 11mm per louvre

127mm Blind

Allow 65mm – Plus 11mm per louvre

For Double Opening Blinds the same formula applies.

**CONTACT US TODAY  
FOR A FREE SITE SURVEY & QUOTATION**

**0800 3 10 10 20**